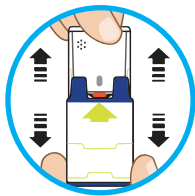


Listen up! **Allerject**[®] is now available

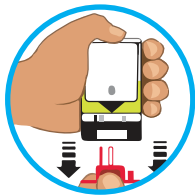
Epinephrine Injection, USP

ALLERJECT[®] is a portable epinephrine auto-injector with built-in voice assistance, designed to be easy to use in an allergic emergency



STEP 1 | Pull ALLERJECT from the outer case.

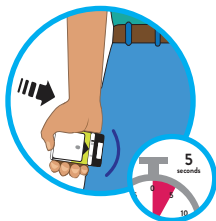
Do not go to step 2 until you're ready to use ALLERJECT. If you're not ready to use it, put it back in the outer case.



STEP 2 | Pull off the red safety guard.

The safety guard is meant to be tight. *Pull firmly to remove.*

To reduce the risk of accidentally injecting yourself, do not touch the black base of the auto-injector (where the needle comes out). If an accidental injection happens, seek immediate medical attention.



STEP 3 | Place the black end against the middle of the outer thigh (through clothing if necessary), then press firmly and hold in place for 5 seconds.

Only inject into the middle of the outer thigh (upper leg). Do not inject into any other location.

If you're administering ALLERJECT to a young child, hold the leg firmly in place while administering the injection.

ALLERJECT makes a distinct "click and hiss" sound when you press it against your leg. This is normal and means that ALLERJECT is working correctly.



STEP 4 | Seek immediate medical or hospital care.

Replace the outer case and take your used ALLERJECT with you to your doctor or pharmacist for proper disposal and replacement.

ALLERJECT is available in 2 doses



ALLERJECT 0.15 mg
For children 15 kg to 30 kg

ALLERJECT 0.3 mg
For anyone 30 kg or more

Talk to your doctor or pharmacist to discuss treatment options for anaphylaxis and whether ALLERJECT is right for you. Always read and follow the patient information leaflet that comes with your ALLERJECT device for warnings and precautions, side effects, and complete dosing and administration information.

[Learn more at Allerject.ca](http://Allerject.ca)

Safety information

ALLERJECT is for the emergency treatment of serious allergic reactions (anaphylaxis) and is intended for people who are at risk and for people with a history of serious allergic reactions (anaphylaxis).

ALLERJECT should be used immediately to treat yourself or your child when experiencing a severe allergic reaction. This is emergency treatment. It does not replace seeing a doctor or going to the hospital. After injection, seek immediate medical attention. Even if you have sought medical help, you must stay within close proximity to a hospital or where you can easily call 911 for the next 48 hours.